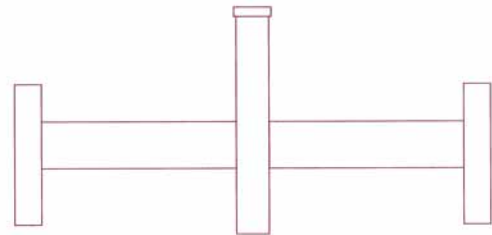
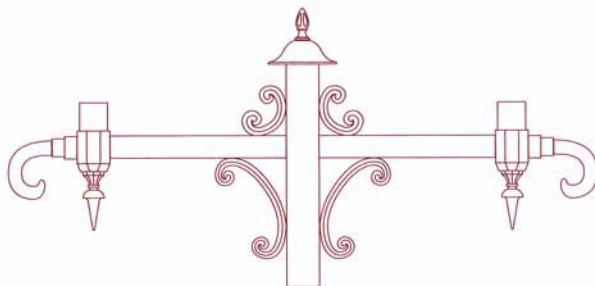


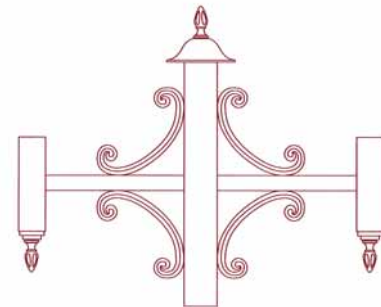
DA05



DA06



DA07



DA08

SPECIFICATIONS

All decorative Cross Arms are one piece construction. Decorative Cross Arm assemblies are cast aluminum Type AA319.OF. to form a rigid, strong base for supporting a wide variety of globes and electrical components utilized in proper mounting. Cross arms are attached to the top of pole by slip fit method with set screws. All hardware for cross arms shall be stainless steel.

FINISH

Each Decorative Cross Arm is sand blasted, cleaned, etched, and primed prior to painting. Standard colors for decorative Cross Arm are black, green, bronze or verde patina powder coated or wet sprayed. Custom colors and special finishes are available.

*If required cross arm is not shown please consult factory.

SEQUOIA LIGHTING
CORPORATION

MANUFACTURERS OF QUALITY LIGHTING PRODUCTS

13644 George Blvd, Suite 1, Victorville, CA, 92394 (760) 246-5213 FAX (760) 246-5294 www.sequoialighting.com