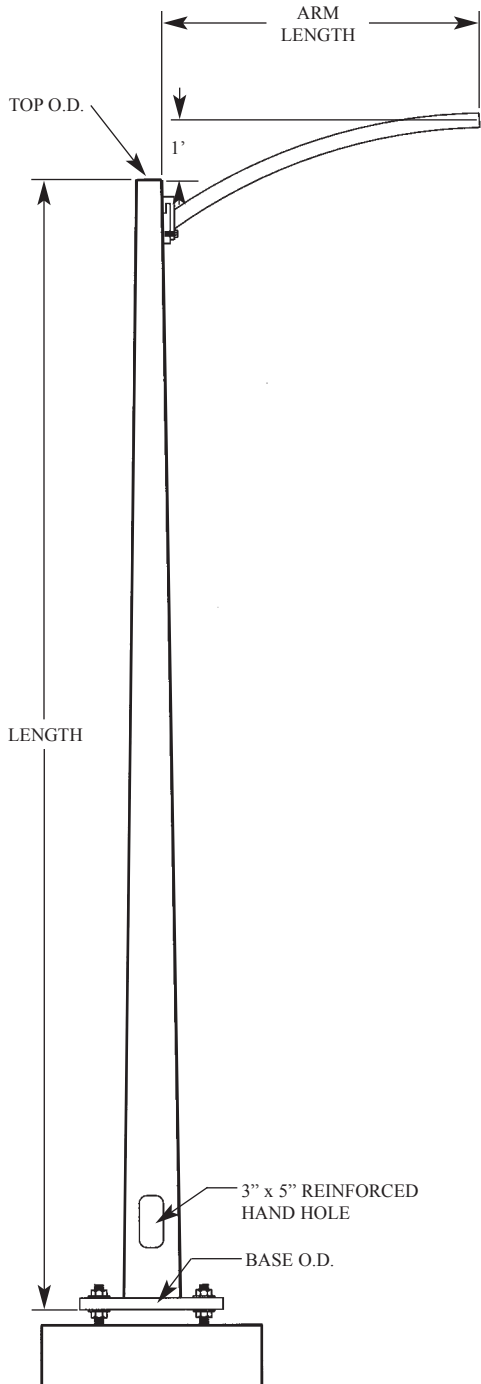
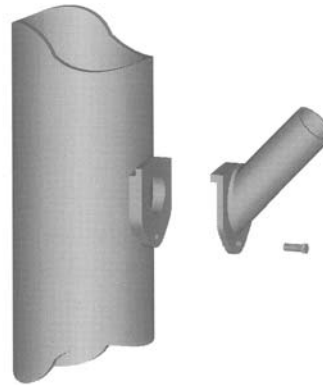


STEEL ARM 1' RISE

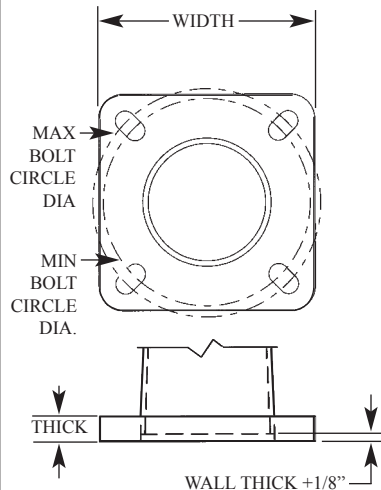


SINGLE BOLT SIMPLEX



SINGLE BOLT SIMPLEX

ANCHOR BOLT DATA



SPECIFICATIONS

The designed capacity of the tapered steel lighting shafts shall be calculated with loading in for 80 mile per hour wind zone, including a 1.3 gust factor (104 MPH), except the working stress has been limited to the minimum yield strength of the material. Design capacity calculations take into account the application of load in the final deflection position

MATERIALS

All steel tapered poles shall be fabricated from not less than the specified gauge of hot rolled commercial steel. It shall have a continuous taper of .14 inches per foot and meet a minimum yield strength of 55,000 PSI.

BASE PLATE

Base plate shall be fabricated from no less than 36,000 PSI minimum yield material. It shall telescope the shaft and be attached by means of two continuous welds, one on the inside of the base at the end of the shaft, and the other on the outside at the top of the base.

ARMS

Luminaire arms shall be fabricated from material having a minimum yield strength of 35,000 PSI. The pole end of the arm shall have a steel fitting welded to it which will permit the positioning of the arm on the plate of the pole held only by gravity, while the arm is secured to the pole by one cap screw .

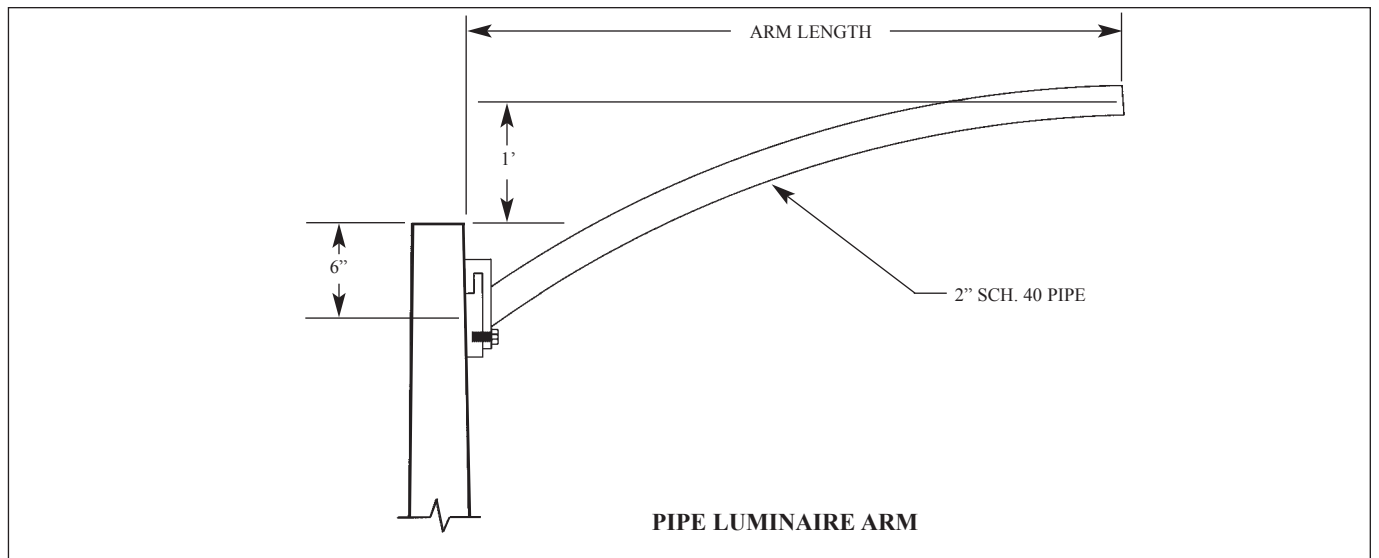
FINISH

Each steel tapered pole is primed than painted with rust inhibiting finish. Pole shall be hot dip galvanized or primed and painted per the agencies specifications.

Pipe Luminaire Arm (1' Rise)

Catalog Number	Mounting Height (ft)	Gross weight (Lbs)	Pole Shaft Data				Arm Length (ft)	Base Plate Data			Anchor Bolt Data
			Base O.D. (in)	Top O.D. (in)	Wall Thk. (in)	Shaft Length (ft)		Bolt Circle Range (in)	Plate Square (in)	Plate Thk. (in)	
SL-20-63-104PX	20	160	6.3	3.64	.1196	19	4	9.5-10.5	10.50	1.00	1 x 36 x 4
SL-20-63-106PX		168	6.3	3.64	.1196	19	6	9.5-10.5	10.50	1.00	1 x 36 x 4
SL-20-63-108PX		175	6.3	3.64	.1196	19	8	9.5-10.5	10.50	1.00	1 x 36 x 4
SL-25-70-104PX	25	204	7.0	3.64	.1196	24	4	10-11	11.00	1.00	1 x 36 x 4
SL-25-70-106PX		212	7.0	3.64	.1196	24	6	10-11	11.00	1.00	1 x 36 x 4
SL-25-70-108PX		219	7.0	3.64	.1196	24	8	10-11	11.00	1.00	1 x 36 x 4
SL-30-77-104PX	30	256	7.7	3.64	.1196	29	4	11-12	12.00	1.00	1 x 36 x 4
SL-30-77-106PX		263	7.7	3.64	.1196	29	6	11-12	12.00	1.00	1 x 36 x 4
SL-30-77-108PX		271	7.7	3.64	.1196	29	8	11-12	12.00	1.00	1 x 36 x 4
SL-35-84-104PX	35	309	8.4	3.64	.1196	34	4	11.5-12.5	12.50	1.00	1 x 36 x 4
SL-35-84-106PX		317	8.4	3.64	.1196	34	6	11.5-12.5	12.50	1.00	1 x 36 x 4
SL-35-84-108PX		324	8.4	3.64	.1196	34	8	11.5-12.5	12.50	1.00	1 x 36 x 4
SL-40-90-104PX	40	366	9.0	3.54	.1196	39	4	12.5-13.5	13.50	1.00	1 x 36 x 4
SL-40-90-106PX		374	9.0	3.54	.1196	39	6	12.5-13.5	13.50	1.00	1 x 36 x 4
SL-40-90-108PX		381	9.0	3.54	.1196	39	8	12.5-13.5	13.50	1.00	1 x 36 x 4
SL-45-10-104PX	45	448	10	3.84	.1196	44	4	13.5-14.5	14.50	1.00	1.25 x 42 x 6
SL-45-10-106PX		455	10	3.84	.1196	44	6	13.5-14.5	14.50	1.00	1.25 x 42 x 6
SL-45-10-108PX		463	10	3.84	.1196	44	8	13.5-14.5	14.50	1.00	1.25 x 42 x 6
SL-50-10-104PX	50	470	10	3.14	.1196	49	4	13.5-14.5	14.50	1.00	1.25 x 42 x 6
SL-50-10-106PX		478	10	3.14	.1196	49	6	13.5-14.5	14.50	1.00	1.25 x 42 x 6
SL-50-10-108PX		485	10	3.14	.1196	49	8	13.5-14.5	14.50	1.00	1.25 x 42 x 6

**REPLACE "X" WITH EITHER 1,2,3 OR 4 TO INDICATE NUMBER OF ARMS PER POLE.*



PIPE LUMINAIRE ARM