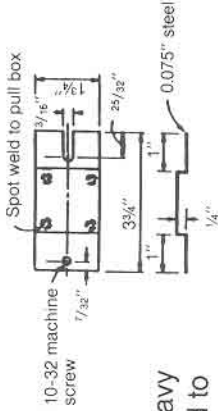


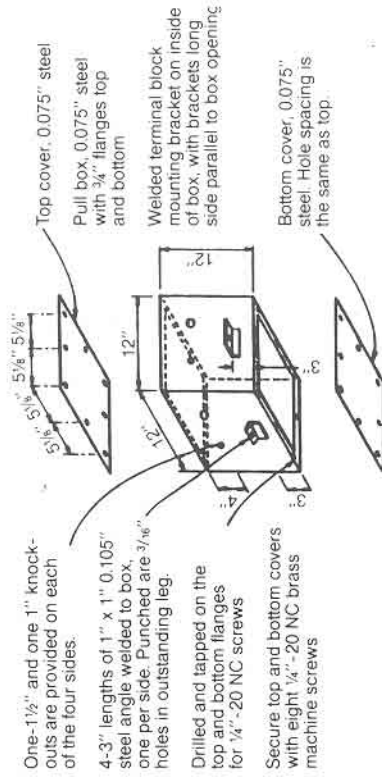
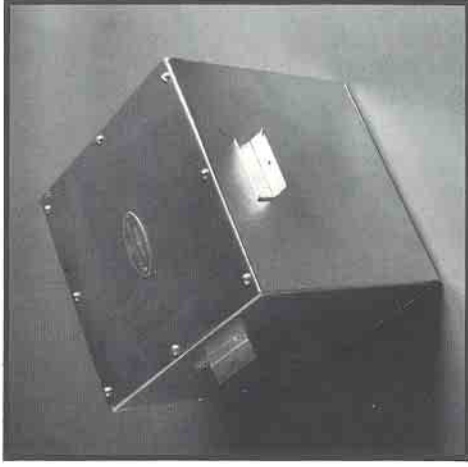
TYPE 7 CEILING PULLBOX

FEATURES:

- Meets the California Department of Transportation requirements for Type 7 Pullbox.
- The Type 7 Pullbox is fabricated from heavy gauge steel and is hot dipped galvanized to afford the maximum protection against harsh roadway elements.
- Each side of the Type 7 Pullbox is provided with (1) 1 1/2" and (1) 1" knock-out.
- The fully gasketed top and bottom covers are secured to the pullbox with (8) 1/4"-20 brass screws to ensure a weather tight seal.
- The Type 7 Pullbox is equipped with a terminal block mounting bracket that has been pre-drilled for quick and easy installation.



TERMINAL BLOCK MOUNTING BRACKET



One-1 1/2" and one 1" knock-outs are provided on each of the four sides.
 4-3" lengths of 1" x 1" 0.105" steel angle welded to box, one per side. Punched are 3/16" holes in outstanding leg.
 Drilled and tapped on the top and bottom flanges for 1/4"-20 NC screws
 Secure top and bottom covers with eight 1/4"-20 NC brass machine screws

ORDERING INFORMATION

CATALOG NO.	SERIES	TYPE
7-CT	#7	CEILING

*CUSTOM DESIGN AND MANUFACTURING ASSISTANCE AVAILABLE

This document contains proprietary information of the Sequoia Lighting Corp. and is transmitted in confidence. Any reproduction, disclosure, or use of this document is expressly prohibited except as Sequoia Lighting Corp. may otherwise agree in writing.
 COPYRIGHT 1993 © SEQUOIA LIGHTING CORPORATION